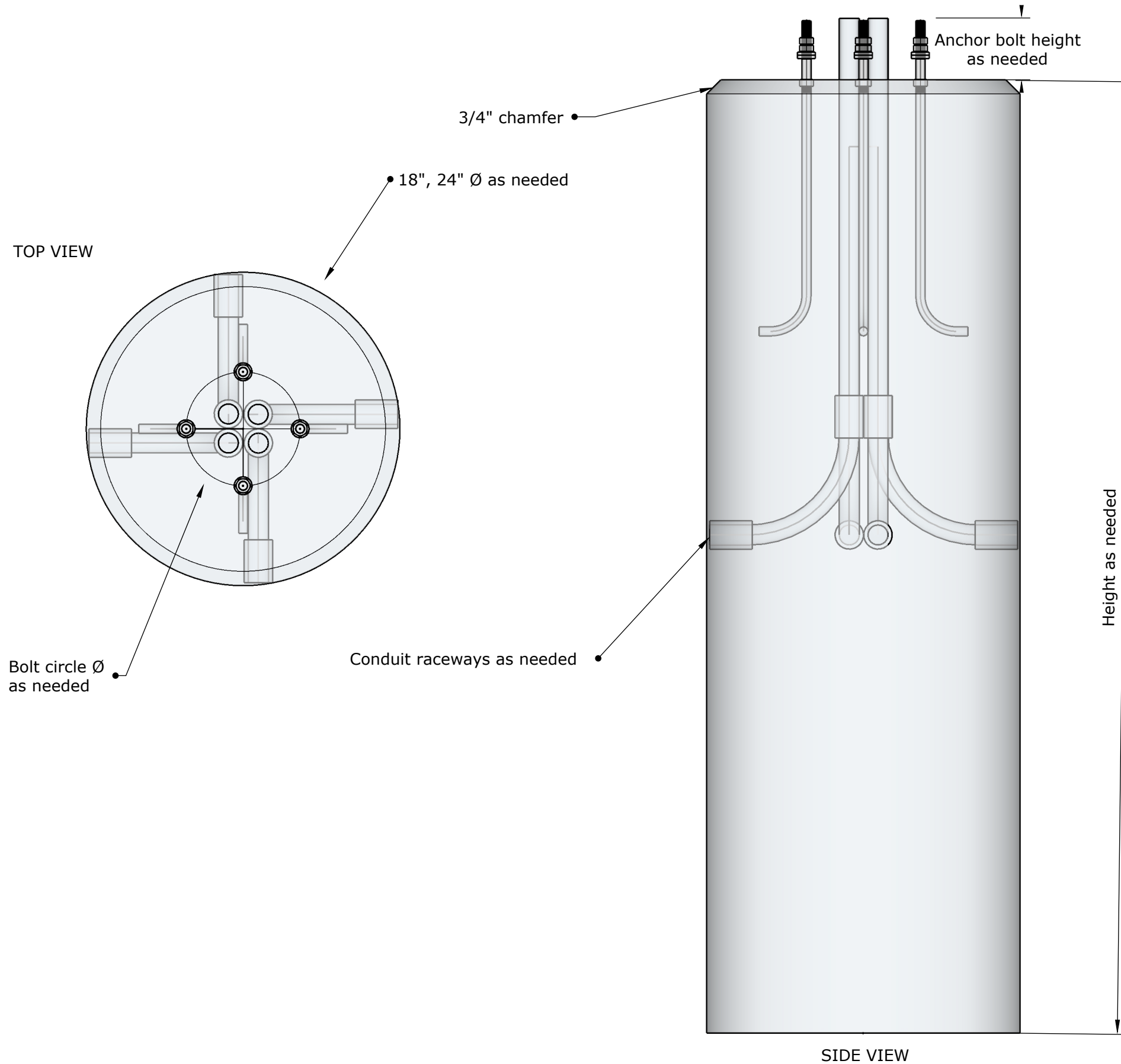


# Light Pole Base



M-1 Tanks Precast  
13058 N Frontage Rd E  
Moses Lake Wa  
98837  
509-766-2914



## Notes:

- Weight = 18" Ø ~280lbs/ft
- 24" Ø ~560lbs/ft

## Details:

- Concrete Strength - 4000 PSI
- Rebar: #3 rings @ 12" O.C.

